



TRANE®

It's Hard To Stop A Trane.®

S-Series Furnace



IR Ingersoll Rand

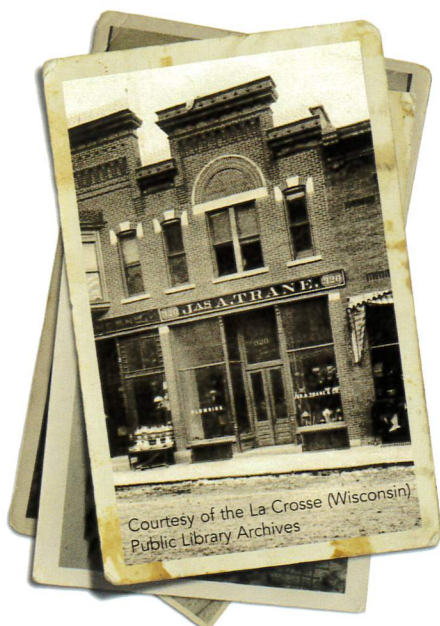


TRANE®

It's Hard To Stop A Trane.®

Comfort meets efficiency.

When it comes to heating and cooling homes, people view Trane equipment as the most reliable and longest lasting in the industry.* That's because we use premium materials and time-tested designs that deliver more comfort for less energy, with reliability that's legendary throughout the business. When you trust Trane, you're trusting the leader.



Trane Storefront
La Crosse, Wisconsin
1891

It started over a hundred years ago, when Reuben and James Trane made the decision to stand out from the crowd. To build a comfort system like no other, using uncompromising quality, innovation and reliability. Today, their legacy is found in everything Trane makes, from our premium materials to our industry-leading technology to our extensive product testing under the harshest conditions. When you buy a Trane, you're buying a commitment from us, to you. A commitment to your total comfort, and your total peace of mind. Because that's what Reuben and James would have done.



At Trane, we never settle for meeting industry standards, we strive to exceed them. So when the industry minimum testing requirement for a furnace heat exchanger is 10,000 cycles, we run it 25,000 times, subjecting it to rapid heating and cooling that will uncover any weakness in design or materials. It's harsh, but it's worth it. Because we build Trane furnaces to last, not just in the lab, but in your home.



The Trane DNA

It's at the core of every Trane product: quality and reliability. And it's built into our new 34" tall S-Series gas furnace – along with innovative features that make it more efficient in both heating and cooling. And with a gas efficiency rating (AFUE) of up to 97%, the S-Series provides significant energy savings in winter and summer.

A closer look inside the S-Series Furnace.

Silicon Nitride Hot Surface Igniter provides a highly reliable ignition system for longer service life.

Multi-Port In-Shot Burners perfectly shape the flame cone for the maximum heat possible while using less fuel.

Two-Stage Gas Valve adjusts fuel use based on your heating demand, providing more comfort with lower, longer run times and reduced temperature swings.

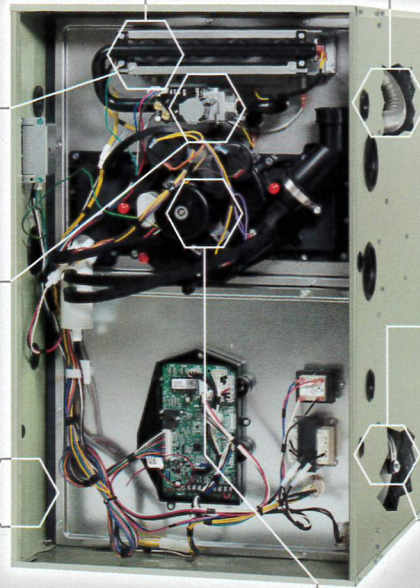
Heavy Steel Insulated Cabinet holds more heat in the furnace, ensures greater durability and reduces operating sound.

Stainless Steel Primary Heat Exchanger withstands higher temperatures, resists corrosion, and is efficient at heat transfer, while improving airflow efficiency in both winter and summer.

Secondary Heat Exchanger extracts even more heat from the combustion process and is made of corrosion-resistant 29-4C stainless steel.

Variable-Speed Blower Motor with Comfort-R™ allows quieter system startups and shutdowns, greater efficiency and more thorough heat circulation. Also helps control humidity levels during summer months.

Vortica® II Blower is quiet and efficient in both heating season and cooling season, and is only available from Trane.



Formed Steel Door with Smoked Acrylic View Windows for functional yet attractive appearance.

Two-Speed Draft Inducer works seamlessly with the two-stage gas valve to enhance efficiency, comfort and reliability.

The S-Series Furnace shown is the S9V2 and is for illustration purposes only. Please note that features and components may vary by model. As part of our continuous product improvement, Trane reserves the right to change specifications and design without notice.

S-Series Furnace Model

	S9V2-VS	S9V2	S9X2
Annual Furnace Usage Efficiency - (AFUE)	up to 97.0	96.0	up to 96.0
Variable Speed Blower Motor With Comfort R™	•	•	
High Efficiency 5-speed Constant Torque Motor			•
Two-Stage Heat	•	•	•
Variable-Speed Draft Inducer	•		
Two-Speed Draft Inducer		•	•
Silicon Nitride Hot Surface Igniter	•	•	•
Heavy Steel Insulated Cabinet	•	•	•
Automotive-Grade Gaskets And Insulated Blower Compartment	•	•	•
Stainless Steel Primary Heat Exchanger And Secondary Heat Exchangers	•	•	•
Compatible With Trane CleanEffects™ TFD Models	•	•	•
Self Diagnosing Integrated Furnace Control	•	•	•

All Trane S-Series gas furnaces have a Lifetime Registered Limited Warranty on the heat exchanger and a 10 year Registered Limited Warranty on internal functional parts (residential use only). Ask your dealer for full warranty information at time of purchase.

Trane All-Aluminum Comfort™ Coils



The advantage you can see. And feel.

Higher efficiency and greater comfort. You get both thanks to Trane Comfort™ Coils. Our innovative coils are installed with your Trane furnace to ensure optimal efficiency and comfort, year-round. More specifically, inside the coil, refrigerant evaporates as it absorbs heat from the indoor air that passes over it. This results in our coils serving as a high efficiency "heat exchanger."

In addition, Trane coils are designed with a two-piece inner coil panel and 100% foil-backed insulation cabinet, which provides easy cleaning, as well as, quiet operation. Add it all together and Trane Comfort™ Coils are a reliable product that delivers unmatched performance.



Trane dealers are as hard to stop as a Trane itself.

Independent Trane dealers are as personally invested in your comfort as you are, and take great pride in creating your perfect indoor environment. They are some of the most highly trained in the business and have an extensive understanding of the movement and conditioning of air and the expertise to advise, install and maintain the right system for your home.



P.O.Box 1934, 104 E 11th St
Kearney, NE 68848-1934
308-234-2141 www.fiddelkehvac.com



We Encourage Professionalism



Through Technician Certification by NATE



Ingersoll Rand (NYSE:IR) advances the quality of life by creating comfortable, sustainable and efficient environments. Our people and our family of brands—including Club Car®, Ingersoll Rand®, Thermo King® and Trane®—work together to enhance the quality and comfort of air in homes and buildings; transport and protect food and perishables; and increase industrial productivity and efficiency. We are a \$13 billion global business committed to a world of sustainable progress and enduring results.

